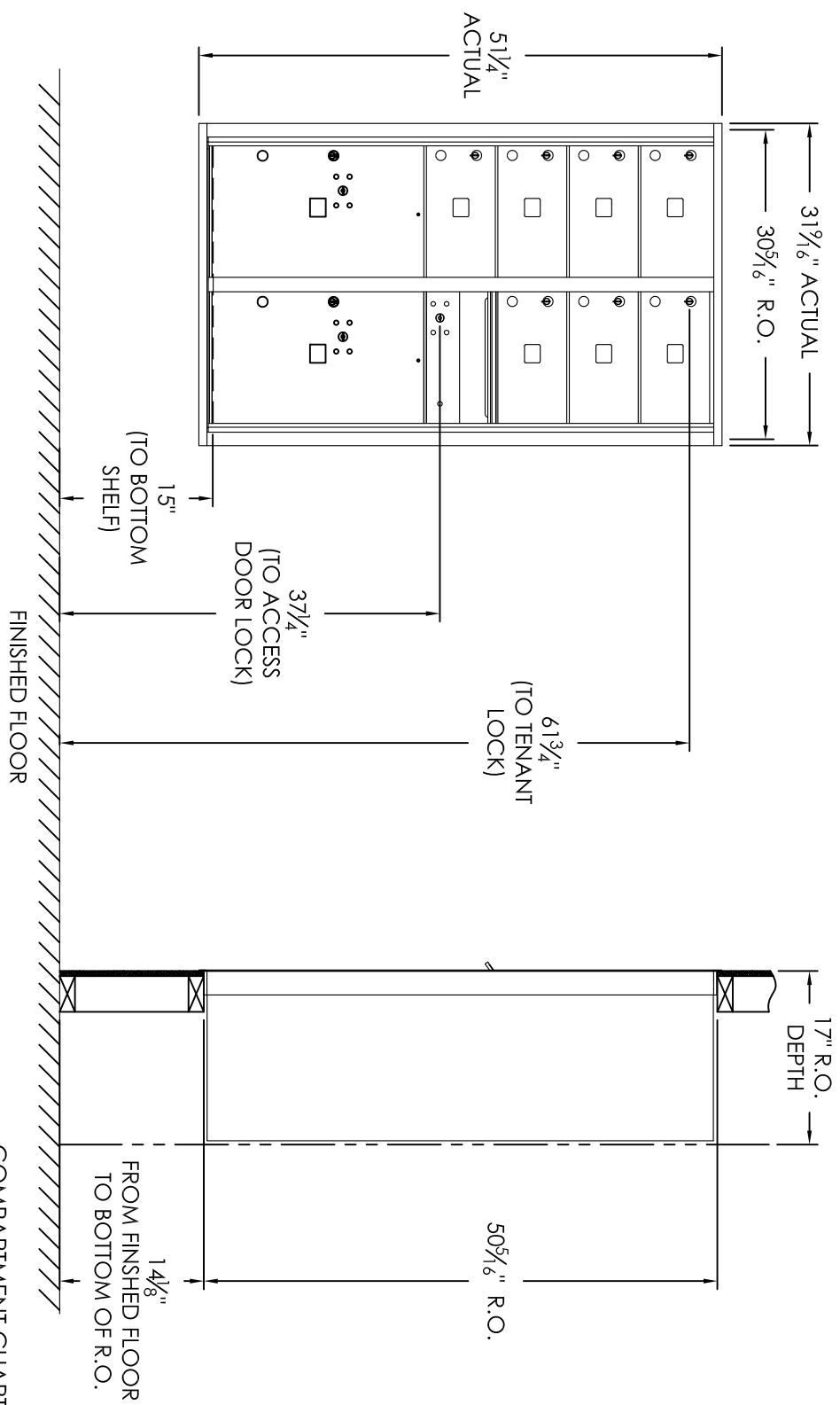


# Versatile™ 4C Mailbox, 4C14D-07



COMPARTMENT CHART

DESCRIPTION	COMPARTMENT	COMPARTMENT SIZE	QTY.
MAILBOX	MB2	6-1/2" H x 12" W x 15" D	7
OUTGOING MAIL	OM2	6-1/2" H x 12" W x 15" D	1
PARCEL	PL6	20-1/2" H x 12" W x 15" D	2

PRODUCT SERIES: VERSATILE™ 4C FRONT LOAD MAILBOX

**AF FLORENCE**  
**manufacturing company**  
 5935 Corporate Drive • Manhattan, KS 66503  
 www.florencemailboxes.com • (800) 275-1747  
 A GIBRALTAR INDUSTRIES COMPANY

MODEL	4C14D-07	REV	A
SCALE	NONE	LAST REV DATE	5/10/2014
DRAWING NUMBER	4C14D-07CS	DRAWN BY	RAK

- Notes:
- This module meets the USPS STD-4C requirements for installation defined below when the mailbox is installed per the dimensions provided on this drawing.
    - At least one customer compartment shall be positioned less than 48" above finished floor (AFF).
    - No parcel locker (interior bottom shelf) shall be positioned less than 15" AFF.
    - No patron (tenant) lock shall be positioned more than 67" AFF.
    - No customer compartment (interior bottom shelf) shall be positioned less than 28" AFF.
    - The USPS Arrow lock shall be positioned 36"-48" AFF.
  - This 4C mailbox can also be used for private applications.
  - The rough opening width for multi-unit 4C installations = (the sum of all actual unit widths) - 1/8".